



Apt 5 36 Millhouses Lane, Sheffield S7 2HB

Saxton Mee

Lettings

Apt 5 36 Millhouses Lane

Per Calendar Month

£675 Per Calendar

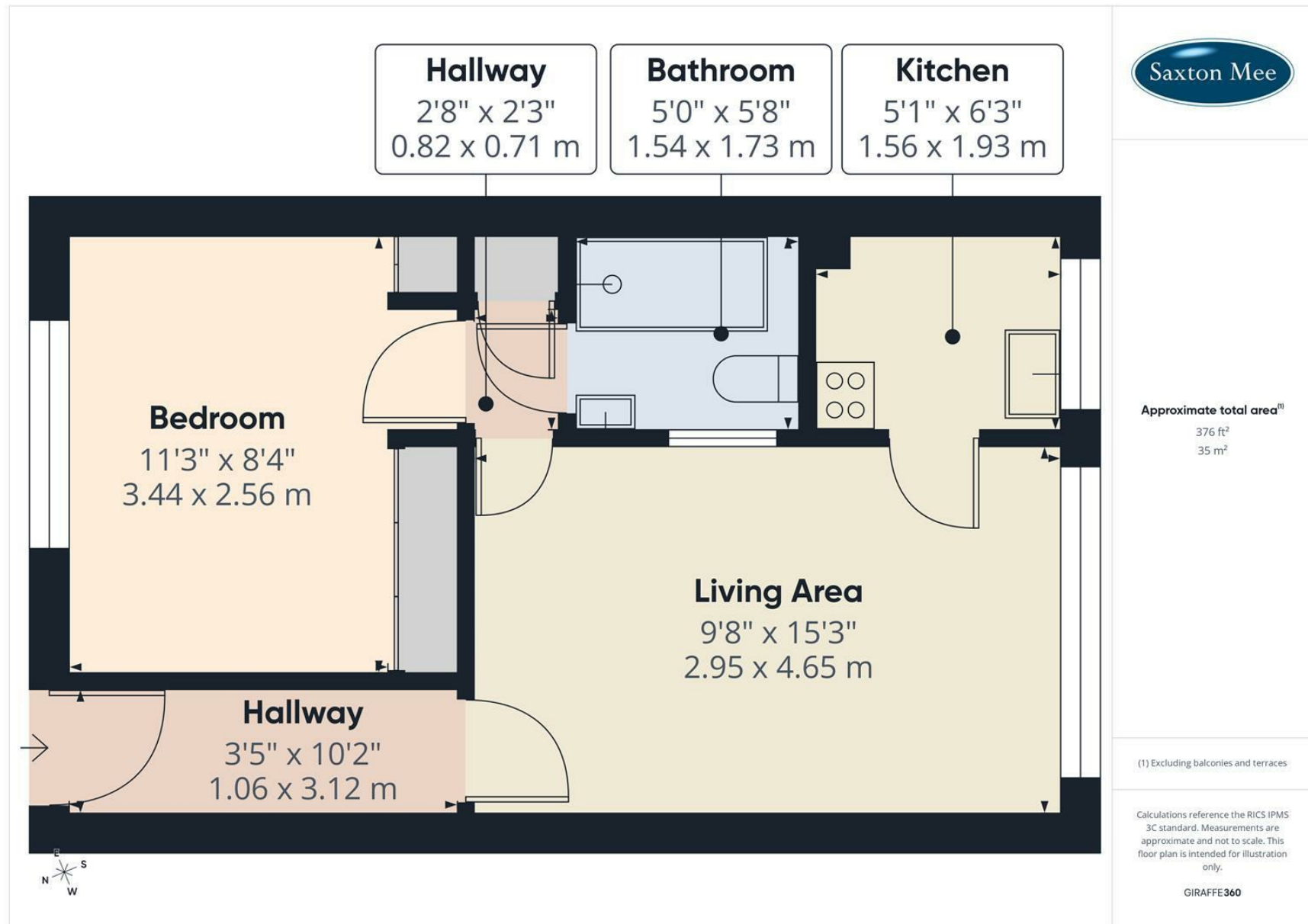
Located in one of Sheffield's most prestigious residential suburbs, this attractively presented one bedroom ground floor apartment offers convenient access to public transport and local amenities.

The accommodation comprises a welcoming entrance hall, a comfortable living room, and a separate fitted kitchen complete with a cooker and washing machine. It further features a double bedroom with built-in wardrobes and a bathroom equipped with a shower. Externally, the property benefits from a communal off-street parking area and well maintained communal lawn grounds.

This property is offered unfurnished and is available on a 6 or 12 month tenancy. Please note that smoking is not permitted within the property. The Energy Efficiency Rating is D and the Council Tax Band is A.







While we endeavour to make our sales particulars fair, accurate and reliable, they are only a general guide to the property and, accordingly, if there is any point, which is of particular importance to you, please contact the relevant office. The Agents have not tested any apparatus, equipment, fittings or services and so cannot verify they are in working order. The buyer is advised to obtain verification. Please note all the measurement details are approximate and should not be relied upon as exact. All plans, floor plans and maps are for guidance purposes only and are not to scale. Under no circumstances should they be relied upon as exact or for use in planning carpets and other such fixtures, fittings or furnishings. YOUR HOME IS AT RISK IF YOU DO NOT KEEP UP REPAYMENTS ON A MORTGAGE OR OTHER LOAN SECURED ON IT. 'A Life Assurance policy may be requested.' 'Written Quotations of credit terms available on request.'

Banner Cross
T: 0114 268 3241
E: bannercross@saxtonmee.co.uk
www.saxtonmee.co.uk

Hathersage
T: 01433 650009
E: hathersage@saxtonmee.co.uk

Bakewell
T: 01629 815307
E: bakewell@saxtonmee.co.uk

Matlock
T: 01629 828250
E: matlock@saxtonmee.co.uk